

Эта страница является [переводом](#) страницы [HDL](#). Перевод выполнен на 100%.

---

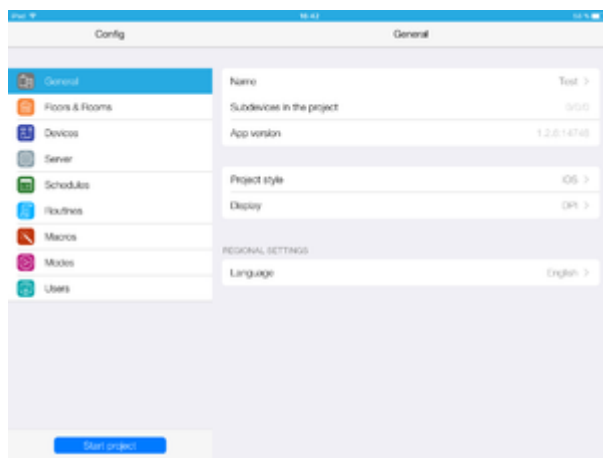
Другие языки:

[English](#) • [русский](#) • □□□□□□

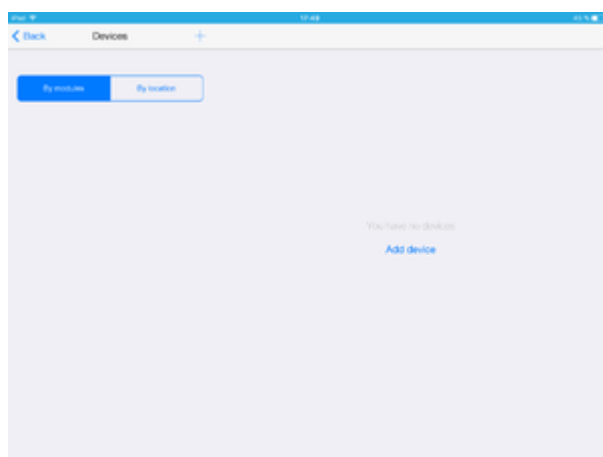
□□□□**HDL**□□□□

## Activating HDL/IP gateway

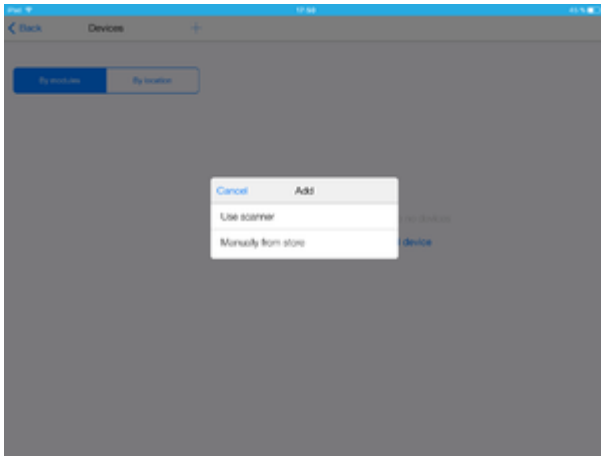
1 Go on **Device** tab.



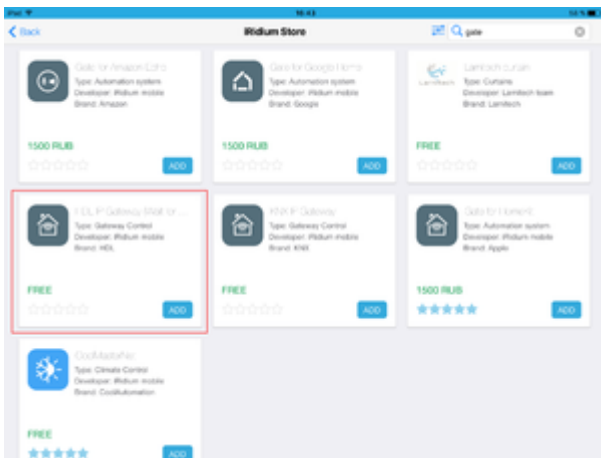
2 Press "Add device".



3 Press "Manually from store".



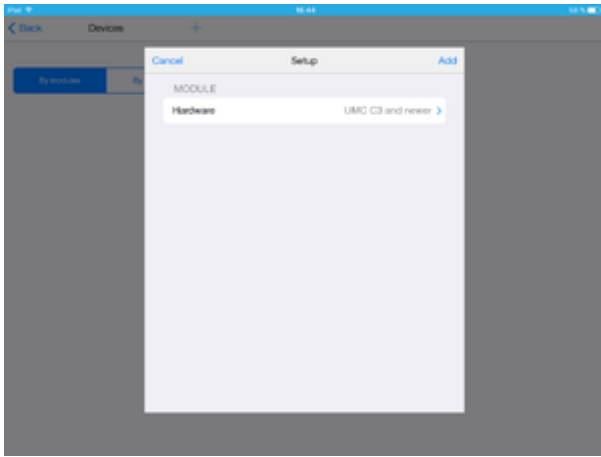
4 You need "HDL IP Gateway".



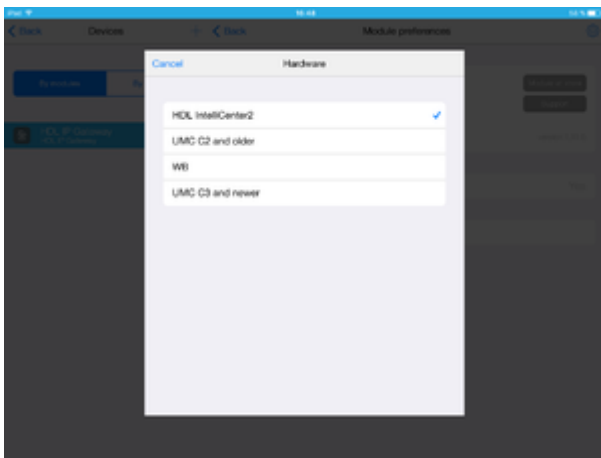
5 Press on "HDL IP Gateway" and get information about it. Add the gateway to the project.



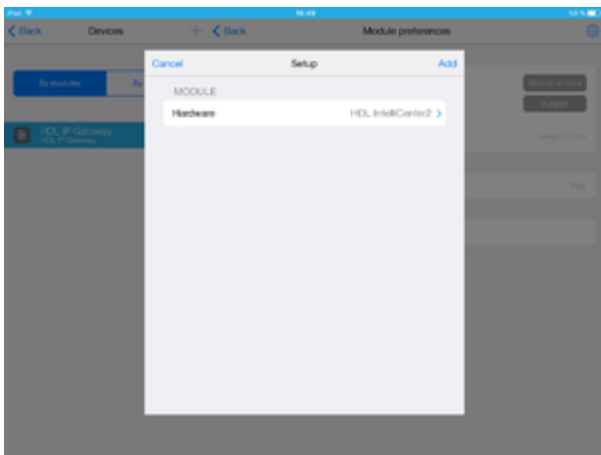
6 Press "Hardware".



7 Select "HDL IntelliCenter2".

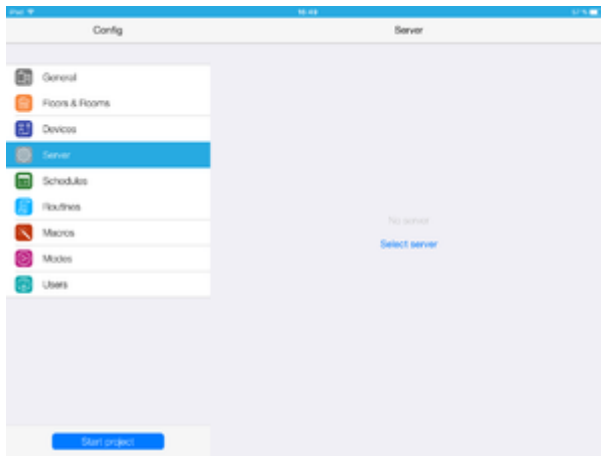


8 Press "Add".

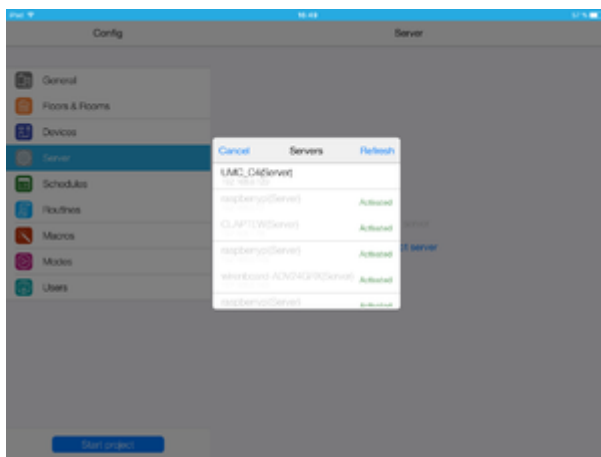


Now "HDL IP Gateway" is in the list of devices .

9 Go on Server tab.



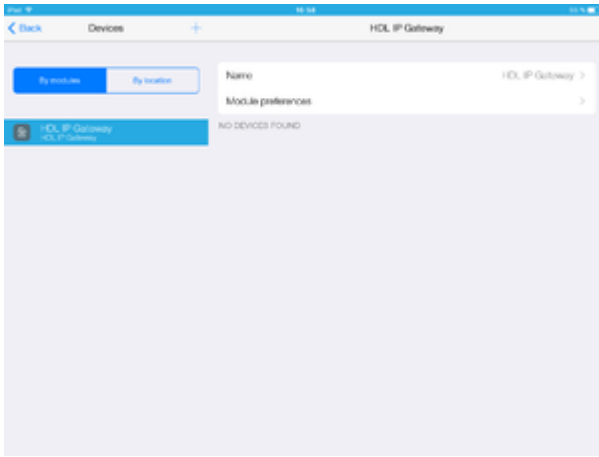
10 Select UMC C4 server.



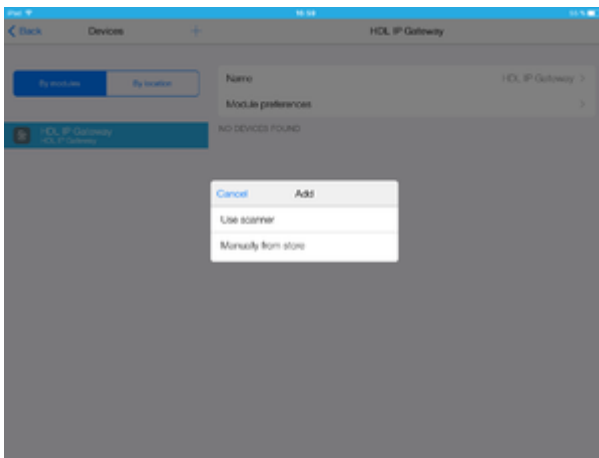
11 Server is activated.



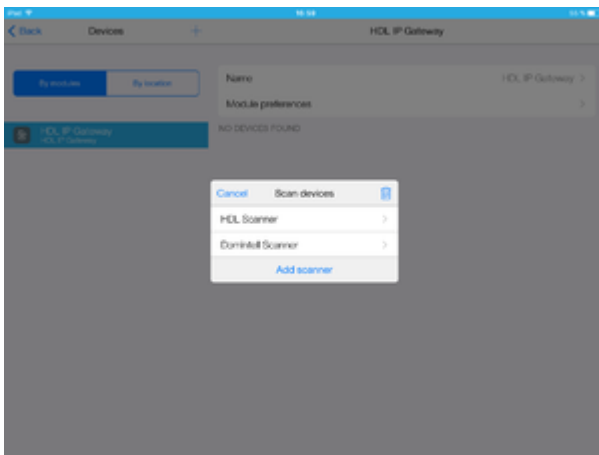
12 Go on **Device** tab.



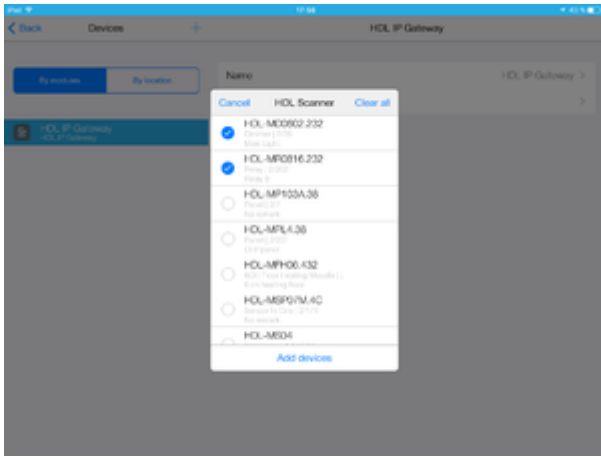
13 Press "+" button (add device).



14 Select HDL Scanner.



15 Scanner shall found all HDL devices, you may select required ones and press "Add devices".



16 Selected devices is in project.

